

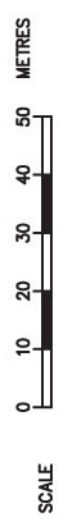


**LEGEND**

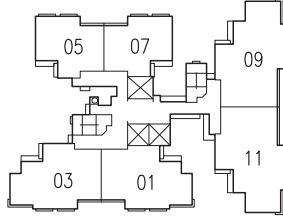
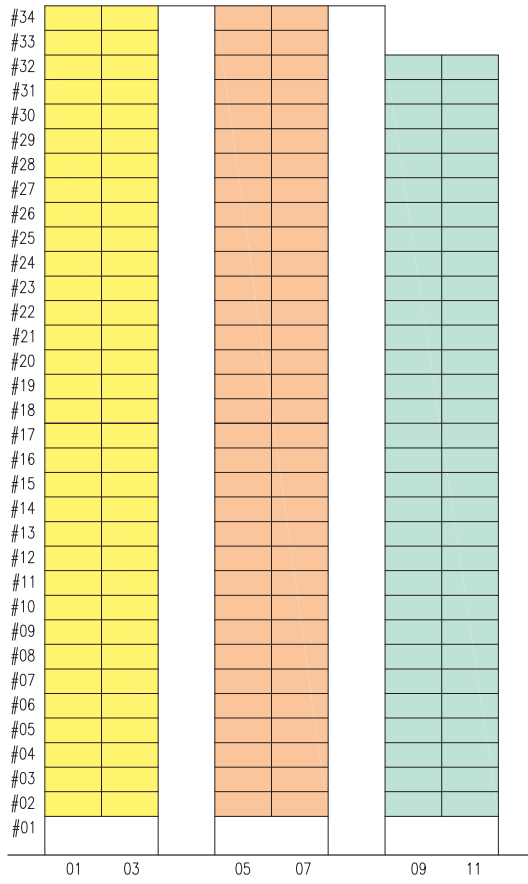
- 3 - Room
- 4 - Room
- 5 - Room
- Surrounding Buildings
- Reserved for / Existing Development
- Linkway / Precinct Pavilion / Drop-off Porch / Shelter / Pergola
- ChildCare Centre at 1st. Storey (CCC)
- Children Playground (PG) / Adult Fitness Station (AFS) / Elderly Fitness Station (EFS)
- Electrical Sub-Station (ESS)
- Utility Centre (UC) at 1st. Storey
- Carparking
- Open Space
- Staircase
- Driveway
- Air-well
- Centralised Refuse Chute
- Corridor
- Lift
- Service Bay

Block Number	Number of storeys	3 Room	4 Room	5 Room	Total	Lift opens at
455A	32/34	66	66	62	194	Every storey
455B	32/34	-	66	128	194	Every storey
455C	31/33	64	124	-	188	Every storey
<b>Total</b>		<b>130</b>	<b>256</b>	<b>190</b>	<b>576</b>	

Applicants are encouraged to visit the place before booking a flat.

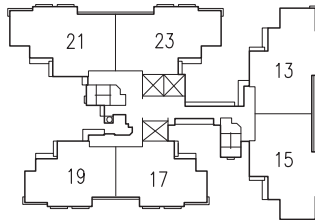
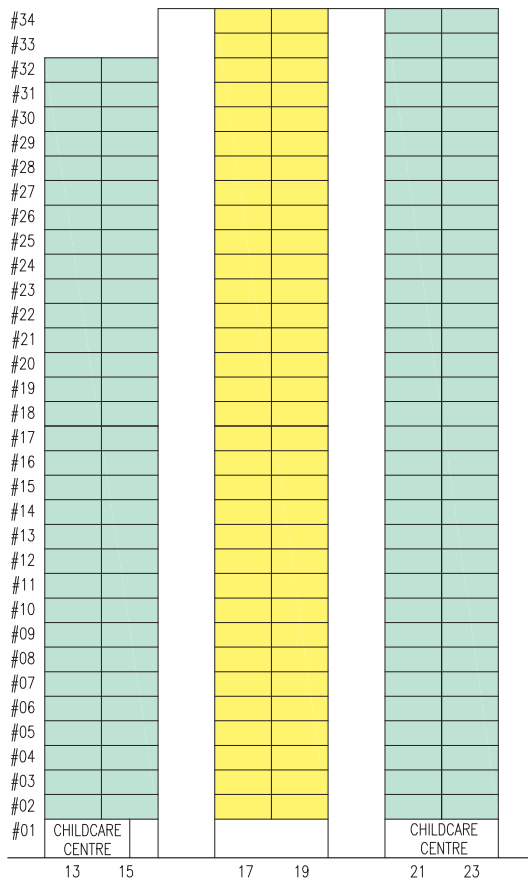


# Unit Distribution



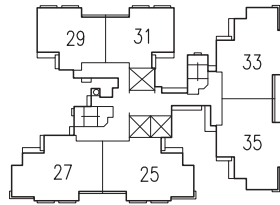
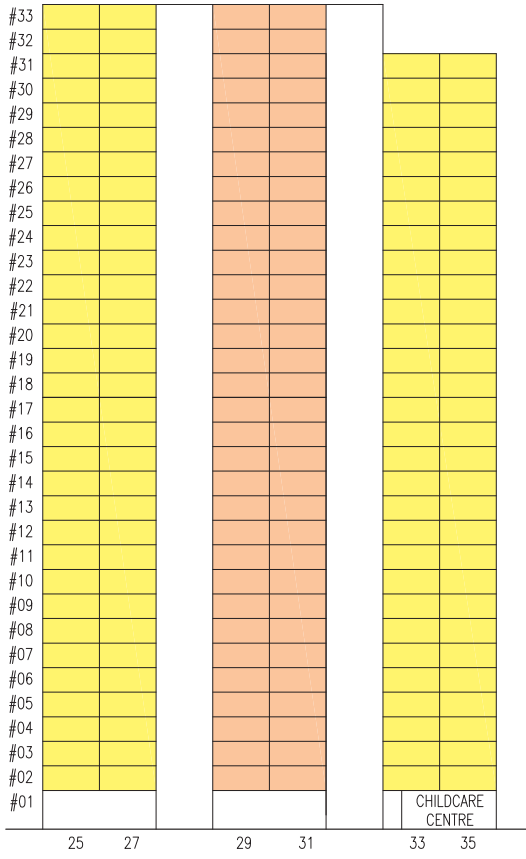
BLOCK 455A

- 3 ROOM
- 4 ROOM
- 5 ROOM



BLOCK 455B

- 4 ROOM
- 5 ROOM



BLOCK 455C

- 3 ROOM
- 4 ROOM



**BLK 455A**  
 (2ND TO 5TH, 10TH TO 15TH, 19TH TO 23RD, 26TH TO 29TH,  
 31ST AND 32ND STOREY FLOOR PLAN)

LEGEND:  
 W1 – THREE QUARTER HEIGHT WINDOW (APPROX. 550mm HIGH PARAPET WALL)

- 3 ROOM
- 4 ROOM
- 5 ROOM

UNLESS OTHERWISE INDICATED ALL WINDOWS  
 WILL BE STANDARD HEIGHT WINDOWS

The coloured floor plan is not intended to demarcate the boundary of the flat.

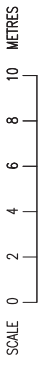


BLK 455A  
 (6TH TO 9TH, 16TH TO 18TH, 24TH, 25TH AND 30TH STOREY FLOOR PLAN)

- LEGEND:  
 W1 – THREE QUARTER HEIGHT WINDOW (APPROX. 550mm HIGH PARAPET WALL)  
 3 ROOM  
 4 ROOM  
 5 ROOM

UNLESS OTHERWISE INDICATED ALL WINDOWS WILL BE STANDARD HEIGHT WINDOWS

The coloured floor plan is not intended to demarcate the boundary of the flat.





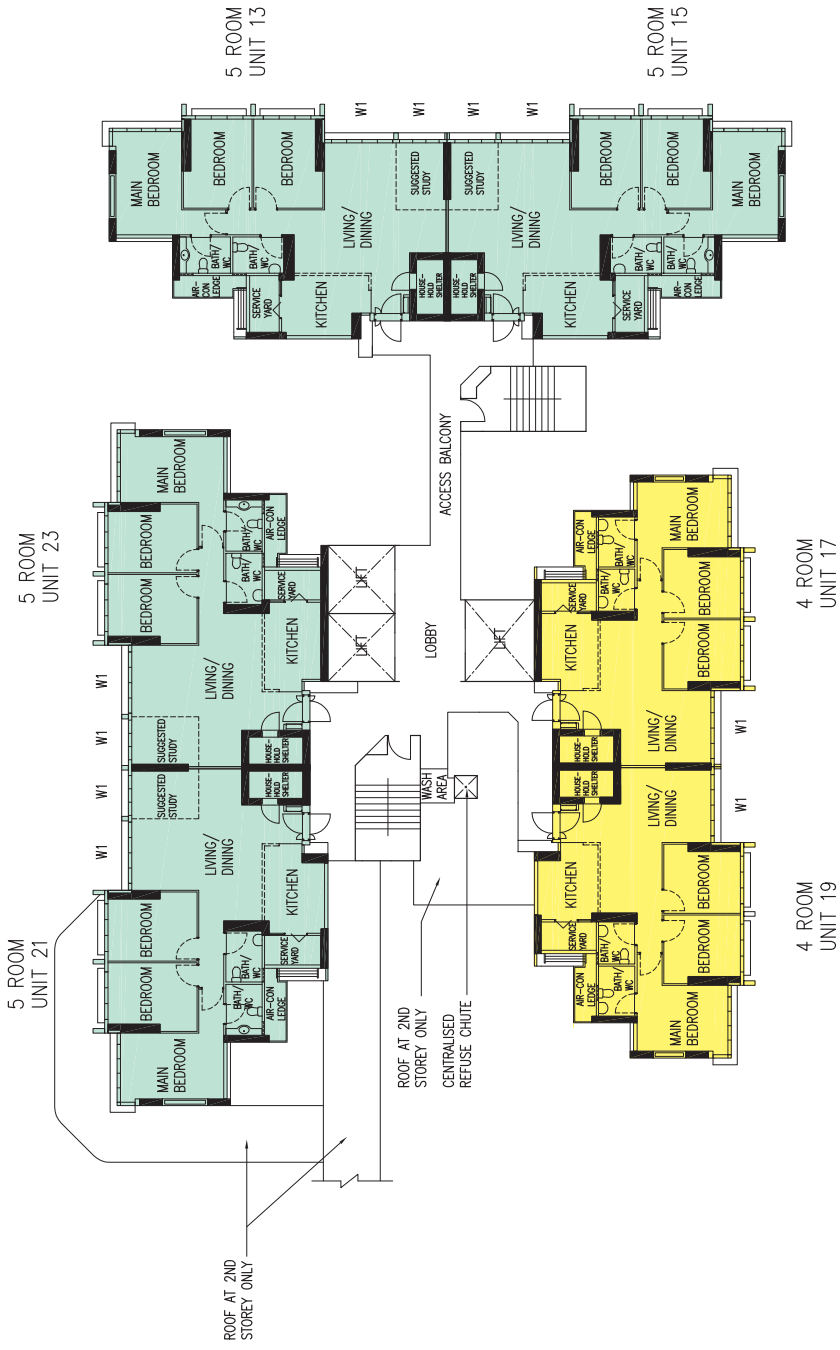
BLK 455A  
(33RD AND 34TH STOREY FLOOR PLAN)

- LEGEND:  
 W1 – THREE QUARTER HEIGHT WINDOW (APPROX. 550mm HIGH PARAPET WALL)  
 3 ROOM  
 4 ROOM  
 5 ROOM

UNLESS OTHERWISE INDICATED ALL WINDOWS  
 WILL BE STANDARD HEIGHT WINDOWS

The coloured floor plan is not intended to demarcate the boundary of the flat.



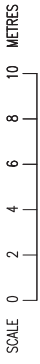


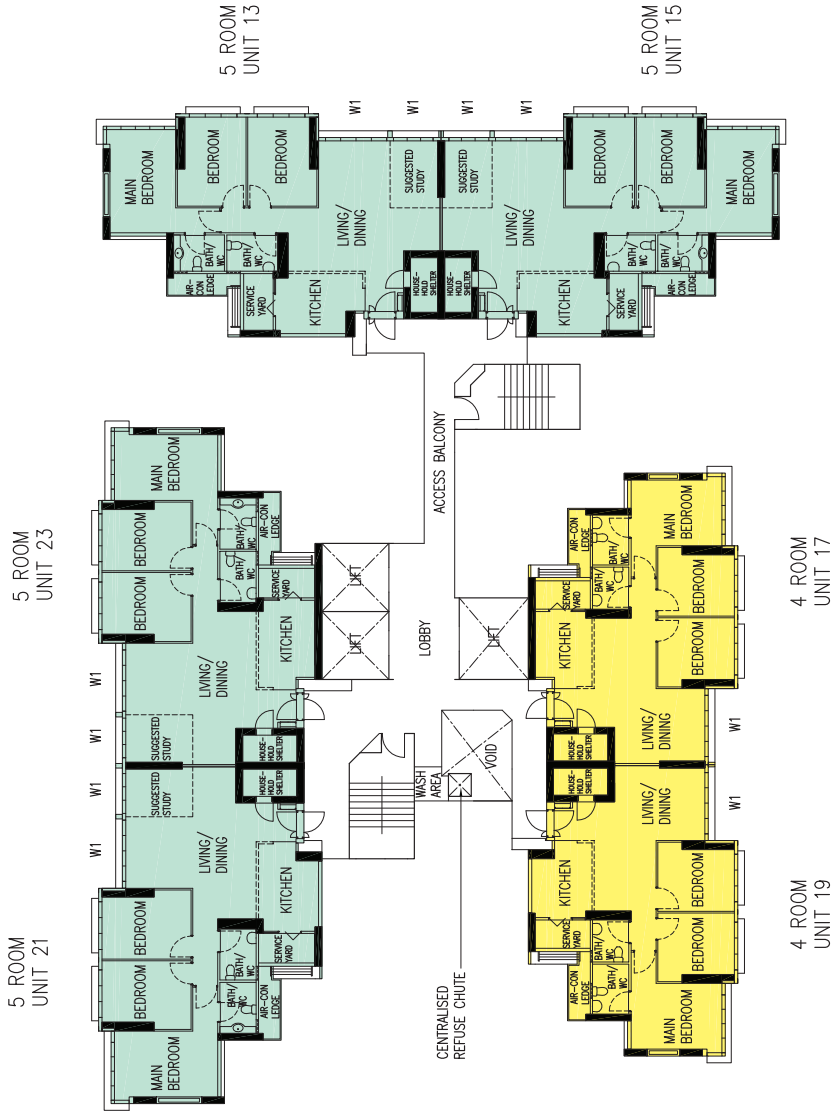
BLK 455B  
 (2ND TO 5TH, 10TH TO 15TH, 19TH TO 23RD, 26TH TO  
 29TH, 31ST AND 32ND STOREY FLOOR PLAN)

- LEGEND:
- W1 – THREE QUARTER HEIGHT WINDOW (APPROX. 550mm HIGH PARAPET WALL)
  - 3 ROOM
  - 4 ROOM
  - 5 ROOM

UNLESS OTHERWISE INDICATED ALL WINDOWS  
 WILL BE STANDARD HEIGHT WINDOWS

The coloured floor plan is not intended to demarcate the boundary of the flat.





BLK 455B  
(6TH TO 9TH, 16TH TO 18TH, 24TH, 25TH AND 30TH STOREY FLOOR PLAN)

LEGEND:  
 W1 – THREE QUARTER HEIGHT WINDOW (APPROX. 550mm HIGH PARAPET WALL)

3 ROOM

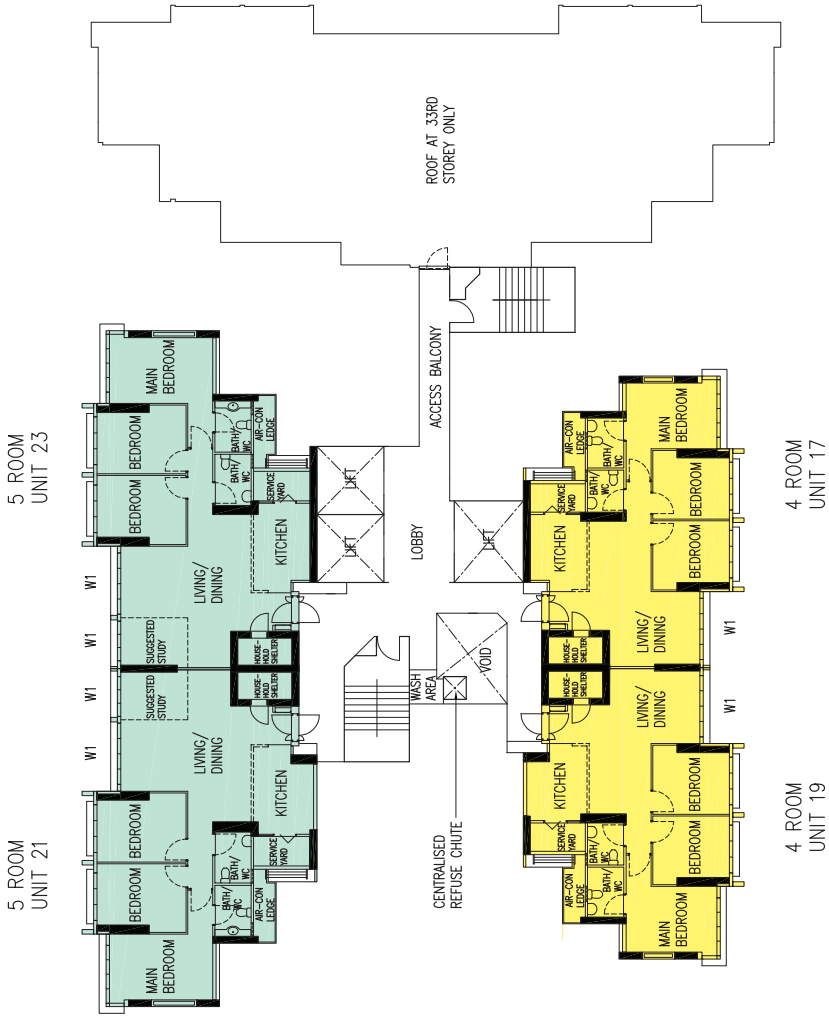
4 ROOM

5 ROOM

UNLESS OTHERWISE INDICATED ALL WINDOWS WILL BE STANDARD HEIGHT WINDOWS

The coloured floor plan is not intended to demarcate the boundary of the flat.





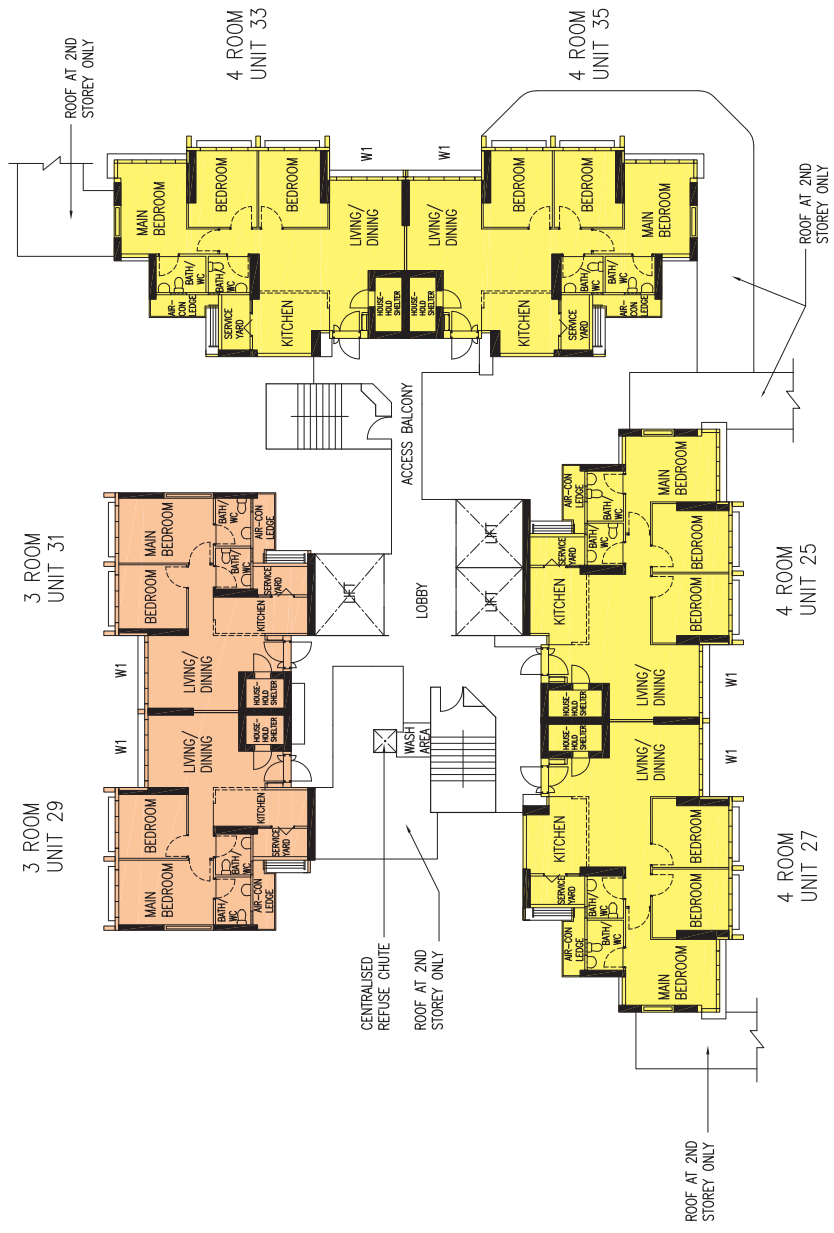
BLK 455B  
(33RD AND 34TH STOREY FLOOR PLAN)

LEGEND:  
 W1 - THREE QUARTER HEIGHT WINDOW (APPROX. 550mm HIGH PARAPET WALL)

- 3 ROOM
- 4 ROOM
- 5 ROOM

UNLESS OTHERWISE INDICATED ALL WINDOWS WILL BE STANDARD HEIGHT WINDOWS

The coloured floor plan is not intended to demarcate the boundary of the flat.



BLK 455C  
 (2ND TO 5TH, 10TH TO 15TH, 19TH TO 23RD, 26TH  
 TO 29TH AND 31ST STOREY FLOOR PLAN)

- LEGEND:
- W1 - THREE QUARTER HEIGHT WINDOW (APPROX. 550mm HIGH PARAPET WALL)
  - 3 ROOM
  - 4 ROOM
  - 5 ROOM

UNLESS OTHERWISE INDICATED ALL WINDOWS WILL BE STANDARD HEIGHT WINDOWS

The coloured floor plan is not intended to demarcate the boundary of the flat.



BLK 455C  
(6TH TO 9TH, 16TH TO 18TH, 24TH, 25TH AND 30TH STOREY FLOOR PLAN)

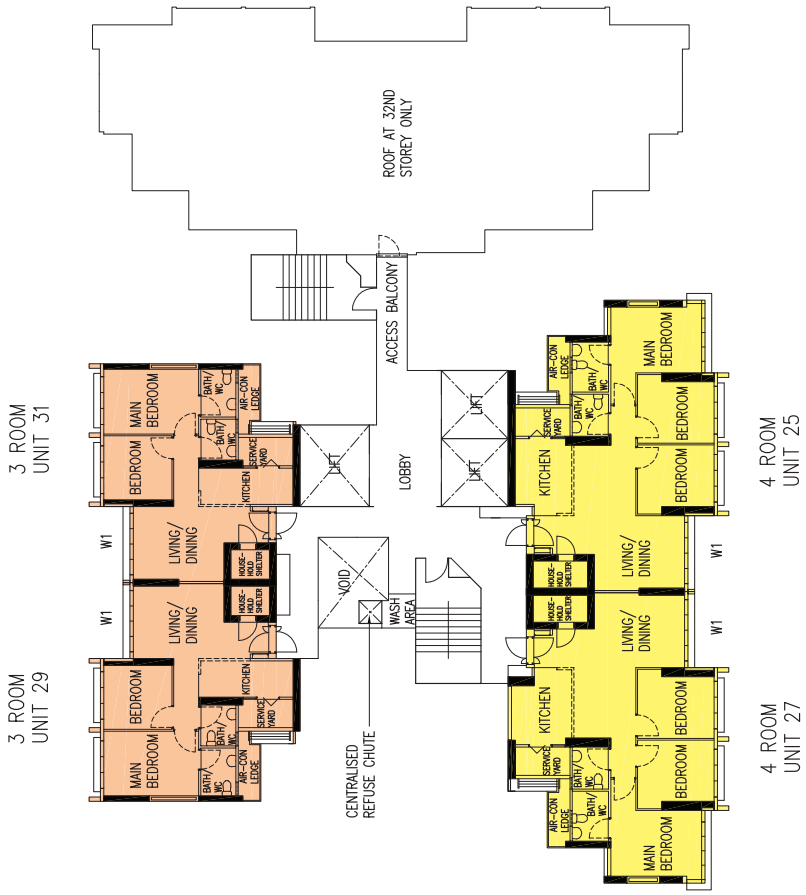
LEGEND:  
W1 – THREE QUARTER HEIGHT WINDOW (APPROX. 550mm HIGH PARAPET WALL)

- 3 ROOM
- 4 ROOM
- 5 ROOM

UNLESS OTHERWISE INDICATED ALL WINDOWS WILL BE STANDARD HEIGHT WINDOWS

The coloured floor plan is not intended to demarcate the boundary of the flat.





BLK 455C  
(32ND AND 33RD STOREY FLOOR PLAN)

LEGEND:  
W1 – THREE QUARTER HEIGHT WINDOW (APPROX. 550mm HIGH PARAPET WALL)

- 3 ROOM
- 4 ROOM
- 5 ROOM

UNLESS OTHERWISE INDICATED ALL WINDOWS WILL BE STANDARD HEIGHT WINDOWS

The coloured floor plan is not intended to demarcate the boundary of the flat.

# General Specifications For Teck Ghee Parkview

## Foundation

Piled foundations.

## Structure

Reinforced concrete structural framework with reinforced concrete slabs.

## Roof

Reinforced concrete roof slab with precast concrete secondary roofing.

## Walls

All external and internal walls are constructed with reinforced concrete/solid blocks/bricks with cement plastering/precast panels/precast lightweight concrete partitions.

## Windows

Aluminium framed windows with tinted glass.

## Doors

Entrance	:	decorative solid timber door and metal gate
Bedrooms	:	laminated semi-solid timber door (Type D9a) (optional)
Bathrooms/WC	:	laminated semi-solid timber door for 3-Room, 4-Room & 5-Room (Type D9a) (optional)
Household Shelter	:	metal door
Service Yard	:	aluminium framed door with glass

## Finishes

Ceilings	:	skim coated or plastered and painted
Kitchen/Bathrooms/WC walls	:	ceramic tiles
Other Walls	:	skim coated or plastered and painted
Living/Dining/Bedrooms floor	:	polished porcelain tiles with timber skirting (optional)
Kitchen floor	:	glazed porcelain tiles
Bathrooms/WC floor	:	ceramic tiles
Service Yard floor	:	glazed porcelain tiles with tile skirting
Household shelter floor	:	glazed porcelain tiles

## Fittings

Quality locksets  
Water Closet Suite  
Vanity top wash basin at attached Bathroom/WC (for 5-room only), wash basin for other Bathroom/WC (optional)  
Bath/Shower mixer with shower set, tap mixer (optional)  
Clothes Drying Rack

## Services

Gas services and concealed water supply pipes  
Concealed electrical wiring to lighting and power points (including water heater and air-conditioning points)  
Television points  
Telephone points

## Important Notes

- 1) The Household Shelter is designed for use as civil defence shelter. The walls, ceiling, floor and door of the Household Shelter shall not be hacked, drilled, altered or removed.
- 2) Air-con panel in the main bedroom will not be provided.
- 3) Any unused or unoccupied open spaces in front of or nearby/adjacent to the flat units are not available for purchase and that the HDB will not entertain any requests from the flat owners to purchase and/or enclose the unused or unoccupied open spaces.

You are advised to visit HDB's website at [www.hdb.gov.sg](http://www.hdb.gov.sg) for information on renovation rules.

## **Disclaimer**

- (i) All information, maps and plans in this brochure are the copyright of the HDB.
- (ii) The information provided in this brochure are not statements or representations of fact. They are not intended to form part of any offer or contract for the sale of the flats.
- (iii) Visual representations like pictures, art renderings, depictions, illustrations, photographs, drawings and other graphic representations and references are only artistic impressions. They are not representations of fact.
- (iv) The information on this project including but not limited to the dimensions, areas, plans, colour schemes, descriptions and specifications are subject to change or review without notice at HDB's sole discretion or if required by the competent authorities.
- (v) HDB may at any time, without any notice and at its sole discretion, change any aspect of this project, including but not limited to the omission, amalgamation, increasing or reducing the number of communal facilities, amenities, colour schemes, design features and specifications shown.
- (vi) HDB will not entertain any request for alteration of the layout or specifications of a flat, to suit individual needs.
- (vii) HDB does not warrant the accuracy of the information and will not be responsible in any way for any inaccuracy or omission of information in the brochure or for any loss suffered by any person as a result of relying on the information.
- (viii) The floor areas are scaled strata areas.
- (ix) The proposed facilities, their locations and surrounding land-use shown in the maps and plans are indicative only and subject to change or review. These facilities may include other ancillary uses allowed under URA's prevailing Development Control guidelines.
- (x) HDB reserves the right to use the void deck in any apartment block for facilities such as child care centres, elderly-related facilities, education centres, resident's committee centres and such other facilities as HDB shall deem fit.