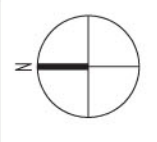




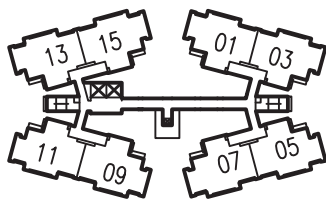
- LEGEND**
- 4-Room
 - 5-Room
 - Surrounding Buildings
 - ChildCare Centre(CCC) at 1st storey
 - Trellis
 - Linkway/Precinct Pavilion(PP) / Shelter/ Drop-off Porch
 - Adult Fitness Station (AFS) / Elderly Fitness Station (EFS) / Children Playground (PG) / YOGA DECK (YD)
 - Electrical Sub-Station (ESS) at 1st. Storey
 - Utility centre (UC) at 1st. Storey
 - Airwell
 - Multi-Storey Car Park
 - Open Space
 - Reserved For/Existing Development
 - Staircase
 - Driveway
 - Corridor
 - Centralised Refuse Chute
 - Lift
 - Service Bay

Block Number	Number of storeys	4 ROOM	5 ROOM	Total	Lift opens at
815A	19	144	-	144	Every Storey
815B	20	95	95	190	Every Storey
815C	20	95	95	190	Every Storey
Total		334	190	524	



Unit Distribution

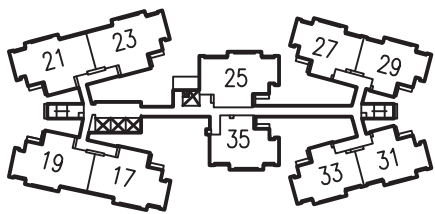
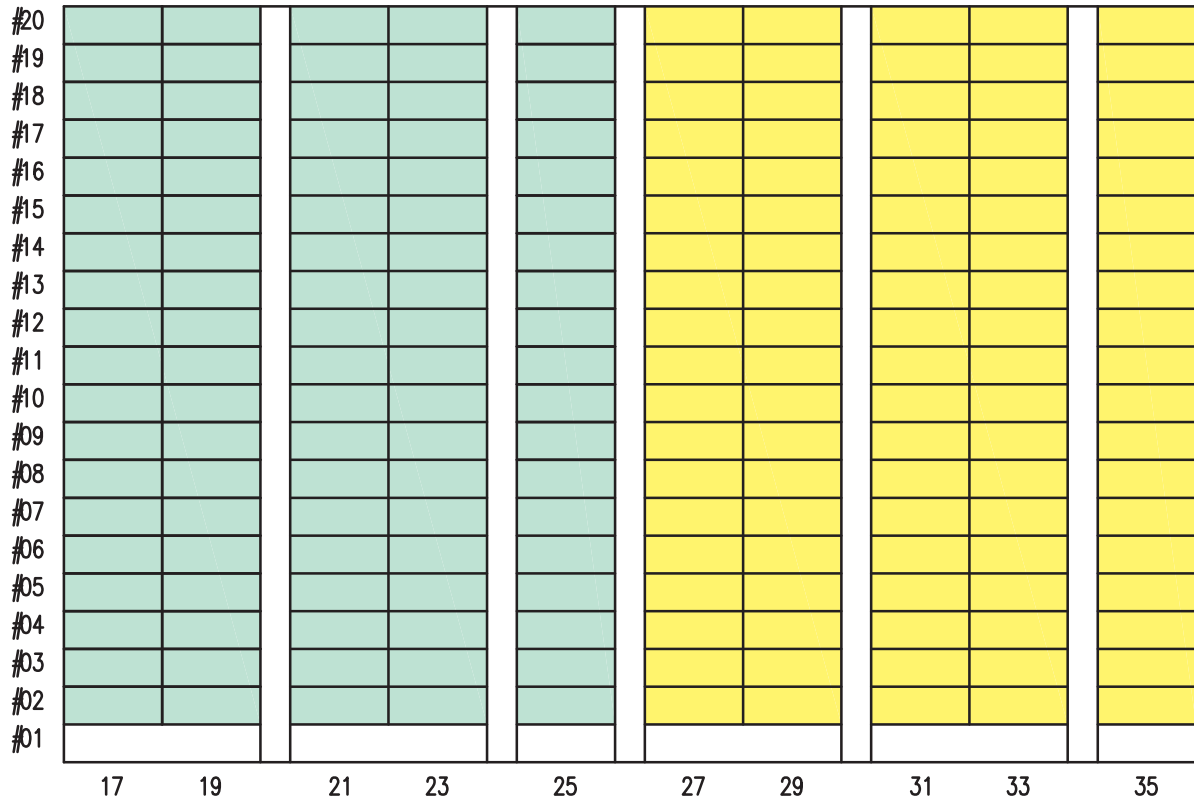
#19									
#18									
#17									
#16									
#15									
#14									
#13									
#12									
#11									
#10									
#09									
#08									
#07									
#06									
#05									
#04									
#03									
#02									
#01	CHILD CARE CENTRE								
	01	03	05	07	09	11	13	15	



BLOCK 815A

4 ROOM

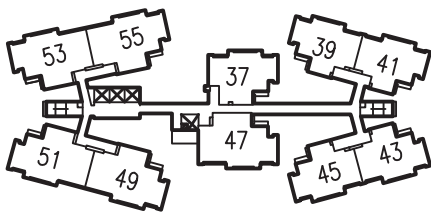
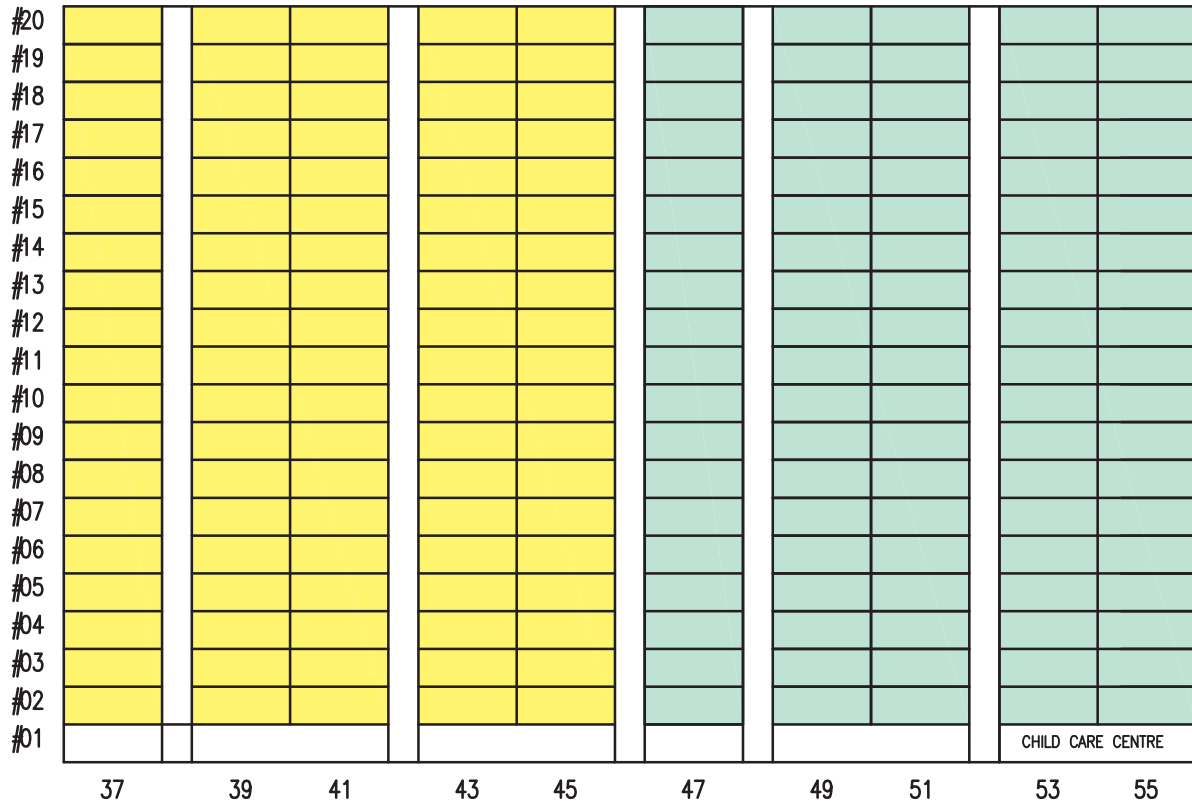
Unit Distribution



BLOCK 815B

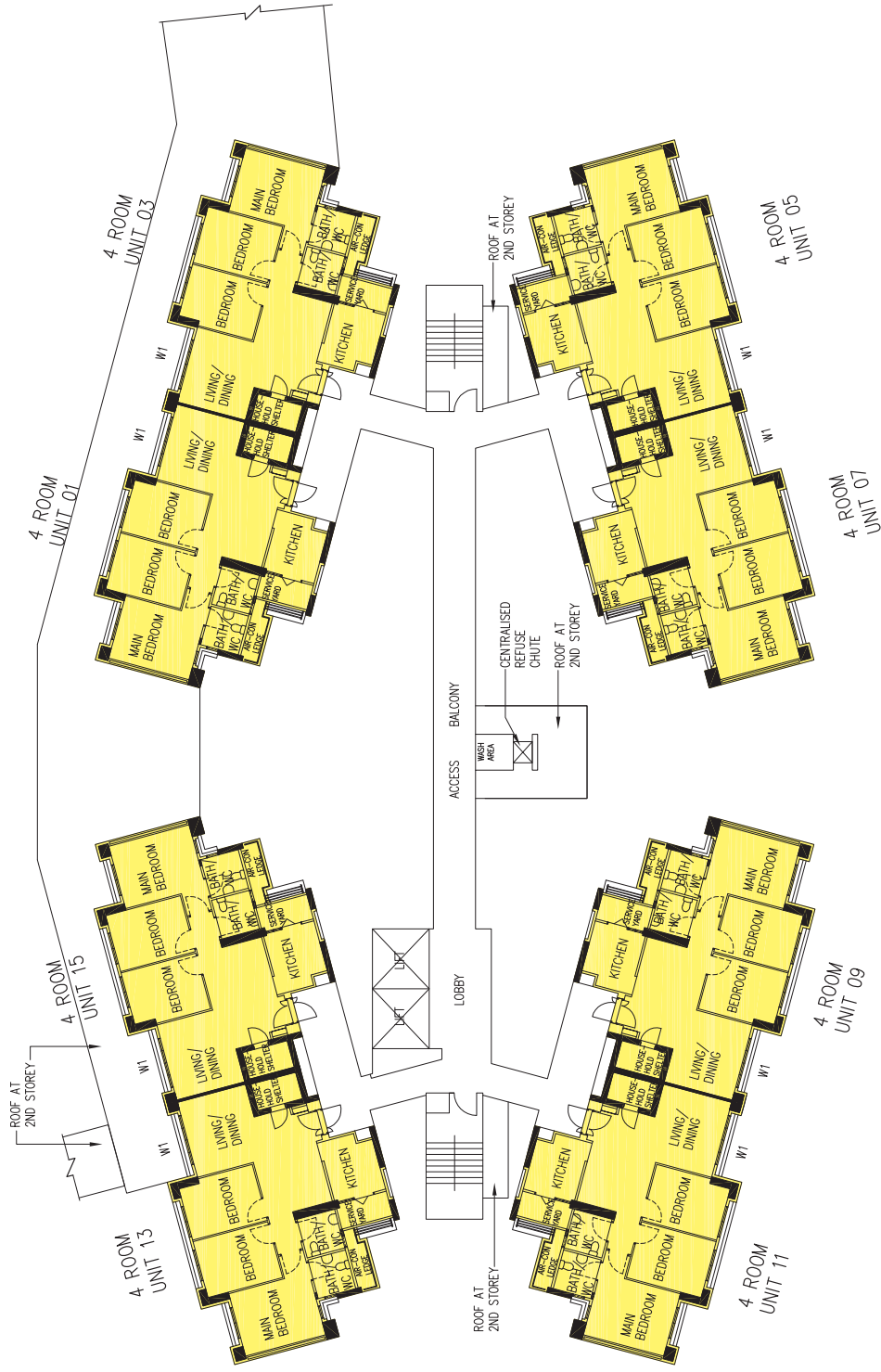
- 4 ROOM
- 5 ROOM

Unit Distribution



BLOCK 815C

- 4 ROOM
- 5 ROOM



BLOCK 815A
2ND TO 19TH STOREY FLOOR PLAN

LEGEND:

4 ROOM

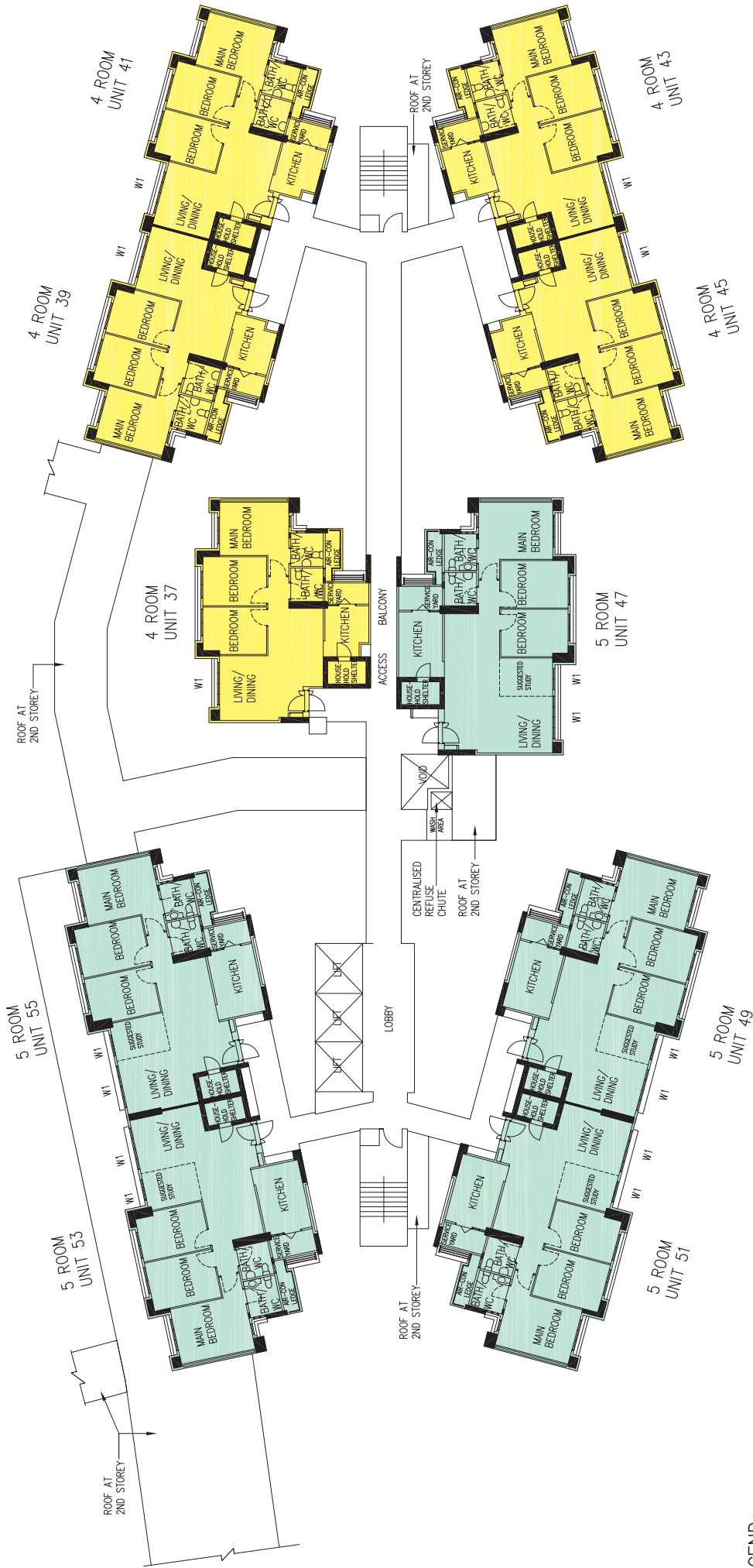
5 ROOM

WINDOW LEGEND

W1 - THREE QUARTER HEIGHT WINDOW (APPROX. 500mm HIGH PARAPET WALL)

UNLESS OTHERWISE INDICATED, ALL WINDOWS WILL BE STANDARD HEIGHT WINDOWS.

The coloured floor plan is not intended to demarcate the boundary of the flat.



BLOCK 815C
2ND TO 20TH STOREY FLOOR PLAN

LEGEND:

- 4 ROOM
- 5 ROOM

WINDOW LEGEND

W1 – THREE QUARTER HEIGHT WINDOW (APPROX. 500mm HIGH PARAPET WALL)

UNLESS OTHERWISE INDICATED, ALL WINDOWS WILL BE STANDARD HEIGHT WINDOWS.

The coloured floor plan is not intended to demarcate the boundary of the flat.

General Specifications For Keat Hong Quad

Foundation

Piled foundations

Structure

Reinforced concrete structural framework with reinforced concrete slabs

Roof

Reinforced concrete roof slab with precast concrete secondary roofing

Walls

All external and internal walls are constructed with reinforced concrete/solid blocks/bricks with cement plastering/precast panels/precast lightweight concrete partitions

Windows

Aluminium framed windows with tinted glass

Doors

Entrance	:	Decorative solid timber door and metal gate
Bedrooms	:	Laminated semi-solid timber door (Type D9a) (optional)
Bathrooms/WC	:	Laminated semi-solid timber door (Type D9a) (optional)
Household Shelter	:	Metal door
Service Yard	:	Aluminium framed door with glass

Finishes

Ceilings	:	Skim coated or plastered and painted
Kitchen/ Bathrooms/ WC walls	:	Ceramic tiles
Other walls	:	Skim coated or plastered and painted
Living/ Dining / Bedrooms Floor	:	Polished porcelain tiles with timber skirting (optional)
Kitchen floor	:	Glazed porcelain tiles
Bathrooms/WC floor	:	Ceramic tiles
Service Yard floor	:	Glazed porcelain tiles with tile skirting
Household Shelter floor	:	Glazed porcelain tiles

Fittings

Quality locksets

Water Closet suite

Vanity top wash basin at attached Bathroom/WC (for 5-room only), wash basins for other Bathrooms/WC(optional)

Bath/Shower mixer with shower set, tap mixer (optional)

Clothes drying rack

Services

Gas services and concealed water supply pipes

Concealed electrical wiring to lighting and power points (including water heater and air-conditioning points)

Television points

Telephone points

Important Notes:

- 1) The Household Shelter is designed for use as civil defence shelter. The walls, ceiling, floor and door of the Household Shelter shall not be hacked, drilled, altered or removed.
- 2) Air-con panel in the main bedroom will not be provided.
- 3) Any unused or unoccupied open spaces in front of or nearby / adjacent to the flat units are not available for purchase and that the HDB will not entertain any requests from the flat owners to purchase and / or enclose the unused or unoccupied open spaces.

You are advised to visit HDB's website at www.hdb.gov.sg for information on renovation rules.

Disclaimer

- (i) All information, maps and plans in this brochure are the copyright of the HDB.
- (ii) The information provided in this brochure are not statements or representations of fact. They are not intended to form part of any offer or contract for the sale of the flats.
- (iii) Visual representations like pictures, art renderings, depictions, illustrations, photographs, drawings and other graphic representations and references are only artistic impressions. They are not representations of fact.
- (iv) The information on this project including but not limited to the dimensions, areas, plans, colour schemes, descriptions and specifications are subject to change or review without notice at HDB's sole discretion or if required by the competent authorities.
- (v) HDB may at any time, without any notice and at its sole discretion, change any aspect of this project, including but not limited to the omission, amalgamation, increasing or reducing the number of communal facilities, amenities, colour schemes, design features and specifications shown.
- (vi) HDB will not entertain any request for alteration of the layout or specifications of a flat, to suit individual needs.
- (vii) HDB does not warrant the accuracy of the information and will not be responsible in any way for any inaccuracy or omission of information in the brochure or for any loss suffered by any person as a result of relying on the information.
- (viii) The floor areas are scaled strata areas.
- (ix) The proposed facilities, their locations and surrounding land-use shown in the maps and plans are indicative only and subject to change or review. These facilities may include other ancillary uses allowed under URA's prevailing Development Control guidelines.
- (x) HDB reserves the right to use the void deck in any apartment block for facilities such as child care centres, elderly-related facilities, education centres, resident's committee centres and such other facilities as HDB shall deem fit.